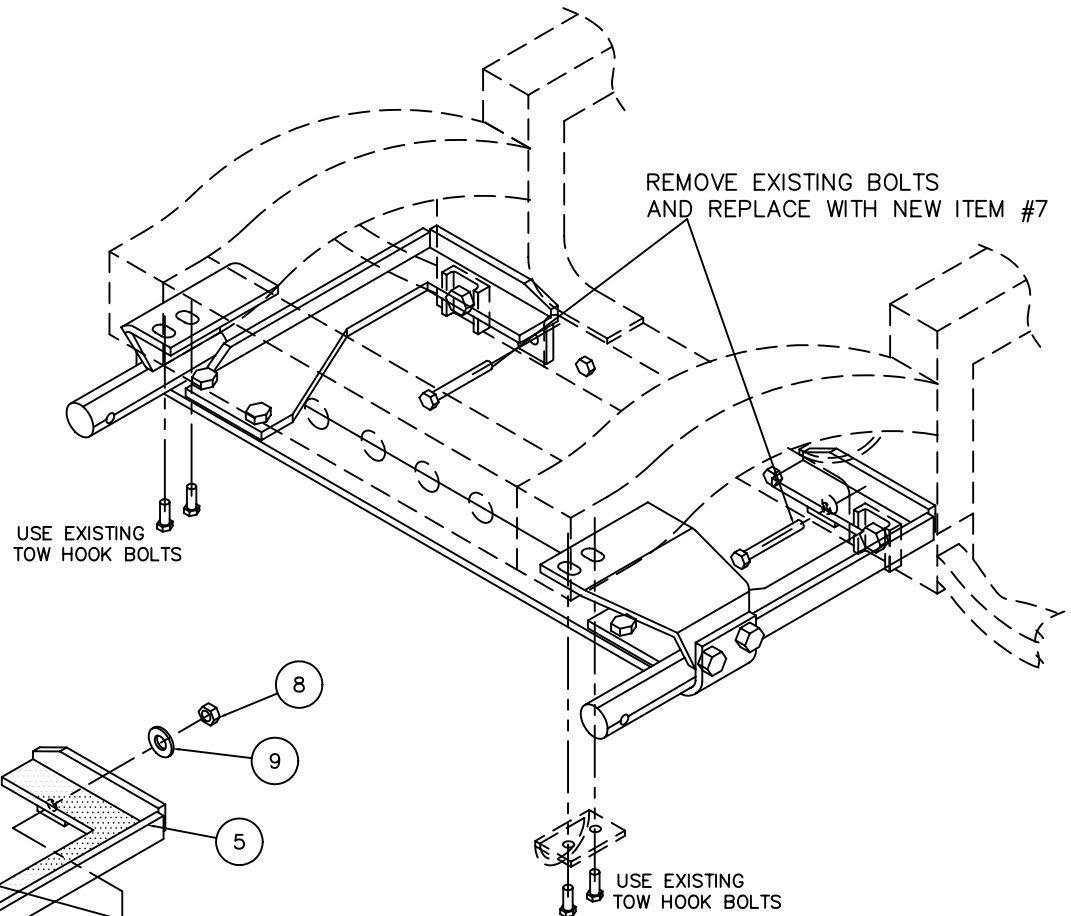
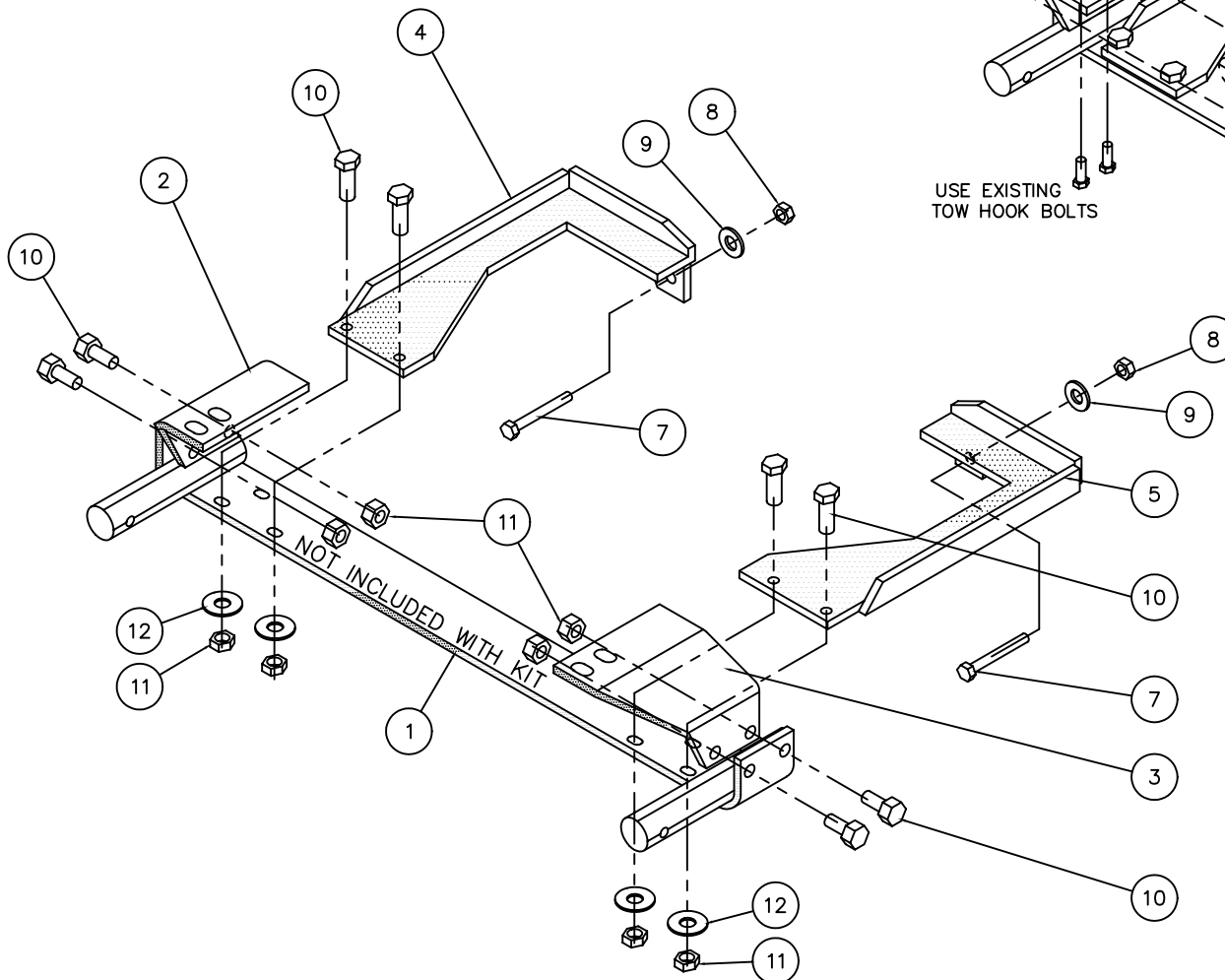


*This custom kit is manufactured by Snowbear Limited to fit:*

TOYOTA 4 RUNNER/PICKUP MOUNT ASSEMBLY

*(4 x 4) YEAR 1986 to 1995*

ITEM	DESCRIPTION	PART #	QTY.
* 1	CROSS MEMBER	5XM5	1
* 2	LH SUPPORT ARM	55105L	1
* 3	RH SUPPORT ARM	55105R	1
* 4	LH C BRACKET	55105LB	1
* 5	RH C BRACKET	55105RB	1
6			
7	HEX BOLT 7/16-14 x 4	72035	2
8	LOCKING HEX NUT 7/16-14	72095	2
9	7/16 FLAT WASHER	72080	2
10	HEX BOLT 1/2-13 x 1 1/2	72510	8
11	LOCKING HEX NUT 1/2-13	72595	8
12	1/2 FLAT WASHER	72580	4



SKID PLATE NEEDS TO BE REMOVED TO ATTACH 'C' BRACKETS. RE-ATTACH SKID PLATE ONCE BRACKETS ARE IN PLACE.

NOTE:  
EARLIER MODELS MAY REQUIRE THE SKID PLATE TO BE LEFT OFF OR MODIFIED.